



# High quality finishes for Glass decoration



Materials that meet  
your aesthetic aspirations,  
performance demands  
and budget realities.

Innovating beautiful yet practical  
products that meet the diverse needs  
of designers, architects, building owners  
and operators, contractors  
and other professionals.

Every surface becomes a potential project in which you can use  
3M AMD solutions to refurbish and redesign the space.

# Elegance and versatility, to manage space with style



Glass means transparency, brightness, lightness, freshness and elegance. It is an essential element in building design such as offices, showrooms and shopping malls. It can be used as communication media, it can be decorated, it can be used to separate public and private spaces, it can be processed to ensure a more comfortable space.

3M Glass Decorative films are perfect for privacy and decorative applications on glass and windows. The ideal solution to give a touch of elegance and originality to the glass surfaces of malls, shops, restaurants, offices, hotels, wellness, spas.

## Content

Our Solutions	04
3M™ Fasara™ Glass Decorative Films	06
Gradation patterns	08
Stripe patterns	10
Border - Horizontal patterns	12
Prism - Dot patterns	14
Fabric - Japan Paper patterns	16
Frost - Mat patterns	18
3M™ Scotchcal™ Dusted/Frosted Crystal Film Series 7725-300	20
3M™ Scotchcal™ Haze/Sandblast Crystal Film Series 5525-300	22

*Whilst every effort has been made to give an accurate representation for each product, due to some limitations of the photographic process, we recommend you to request a sample to support selection.*

# Our Solutions



3M offers a wide range of creative options for decorating glass with surprising effects that can be customised as required, to suit the tastes of each customer. In addition to providing a high-quality end result, these films are easy to adapt, apply and maintain.

## Durability

3M expertise in adhesives ensures of fast, accurate, beautiful and durable application to a variety of glass substrates.

## Flexibility

Perfect for indoor or outdoor application. Works on flat or curved surfaces. The material itself is amazingly flexible and easy to apply. Product can be removed and reapplied if brands or design changes.

## Budget-friendly

You get the beauty, translucency and privacy of etched, cut, sandblasted or texturized decorative glass at a fraction of the price.

Applying Fasara and Crystal glass finishes directly to glass saves time and money, and makes the project go fast and easy. It can be applied on-site with little or no business downtime.

## Application area's

The areas of use of 3M Glass Decorative Films are unlimited:

- Offices, banks and agencies
- Shopping malls, shop windows and showrooms
- Hotels, restaurants, bars and other public places
- Wellness, spa centers and verandas

The films can be applied on glass door, glass wardrobe, mirror, lobby, staircase, windows, partitions...





Fasara Linen

# More than 50 patterns, Unlimited Creativity



## 3M™ Fasara™ Glass Decorative Films

3M Fasara Glass Decorative Films is a range of high quality films made of durable polyester with a decorative matte surface, perfect for privacy and decorative applications on glass and windows. Its application is quick, simple and direct, and does not require removal or transfer of the existing glass for pre-fitting preparation. Ideal for elegant screening of conference rooms, waiting rooms, glass partitions. In addition to a striking visual effect, 3M Fasara ensure the safety of glass, holding the fragments in case of accidental breakage and reduces up to 99% UV radiation. They are available in more than 50 different designs, with different light transmission and reflection.

### Product Information

- High quality polyester film
- Dress all the glazings
- Removable, pressure sensitive acrylic adhesive
- Film thickness varies from 70 to 140 microns
- Low gloss surface
- Shatter resistance
- Flammability standards
- Durability up to 10 years
- Roll sizes: 1,27 x 30 m / 1,27 x 9 m

### Maintenance and Cleaning

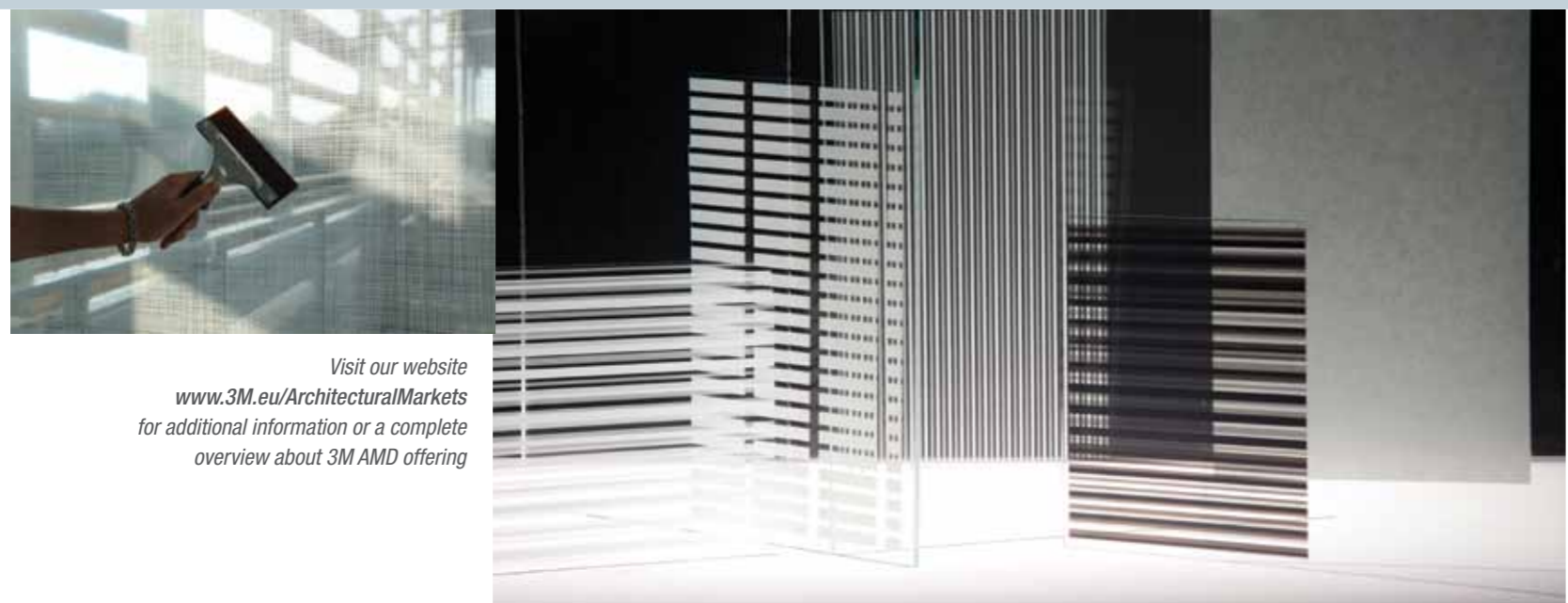
- Film can be removed when required
- No specific maintenance is needed
- If the surface of the film becomes dirty, wash carefully with water
- Abrasive type cleaning agents and brushes must not be used

### Pattern Combination

Some patterns may be combined together, increasing even more the creative possibilities. Contact us for additional information.

Family	Number of patterns	3M Warranty (Years-Interior)	3M Warranty (Years-Exterior)
Gradation	7	5	3
Stripe	9	5	3
Border - Horizontal	7	5	3
Prism - Dot	10	5	3
Fabric - Japan Paper	6	5	3
Frost - Mat	13	5	3

Visit [www.3M.eu/ArchitecturalMarkets](http://www.3M.eu/ArchitecturalMarkets) for additional information.



Visit our website  
[www.3M.eu/ArchitecturalMarkets](http://www.3M.eu/ArchitecturalMarkets)  
for additional information or a complete  
overview about 3M AMD offering

# The Subtlety of Gradations

## 3M Fasara - Gradation patterns

These 3M Fasara films transition from fully opaque white to clear over the full roll width, thanks to a varying density of pixels.

Perfect for areas where you need high level light but total privacy.

Some of them can be combined together to create unique visual effects.



Illumina \*



Illumina g \*\*



Aerina



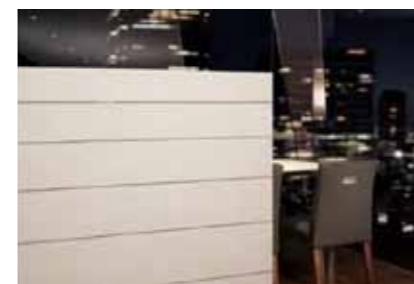
Lontano



Tsurugi



Venetian



Robe

### WHITE COLOUR POINT

\* Illumina: Milky White (same colour as Fasara Luce)

\*\* Illumina g: ice (same colour as Fasara Glace)



# The Elegance of Stripes

## 3M Fasara - Stripe patterns

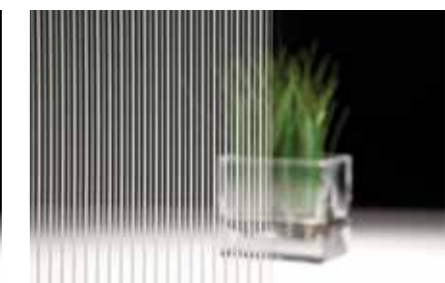
Give a high tech appearance to your glass surfaces, with different patterns offering vertical or horizontal stripes of various thickness and colour density.



Nokto



Radius



Shutie



Shutie Black



Arpa



Arpa Black



Seattle



Seattle Fine



Fine



# Geometric Look

Fasara Leise

## 3M Fasara - Border & Horizontal patterns

Horizontal bands of various sizes displayed in an elegant way to screen out the passage of light.

The Leise pattern, in particular, offers a nice, subtle haze effect.



Lattice \*



Lattice g \*\*



Slat \*



Slat g \*\*



Pixela



Paracell



Leise

### WHITE COLOUR POINT

\* Lattice and Slat: Milky White (same colour as Fasara Luce)

\*\* Lattice g and Slat g: ice (same colour as Fasara Glace)





# Vintage Atmosphere

## 3M Fasara - Prism & Dot patterns

Use prisms and dots to reflect and transmit light and generate charming silver glazing. A design tradition to reproduce the atmosphere of the '50s.



Prism Noir



Prism Silver



Astral Silver



Cielo



Luna 6



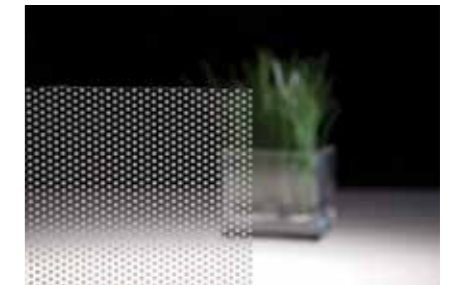
Vista



Luna 9



Aura 9



Shizuku



Kanon

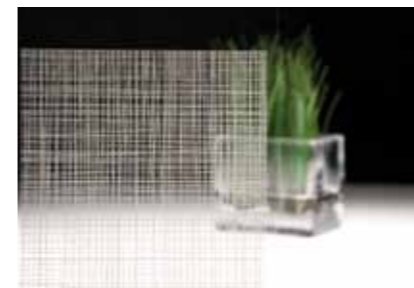


# A taste of Orient



## 3M Fasara - Fabric & Japan patterns

Linen fabric, rice paper, the tradition of oriental design meets the most advanced 3M adhesive technology to offer new and original life to glazing.



Linen



Altair



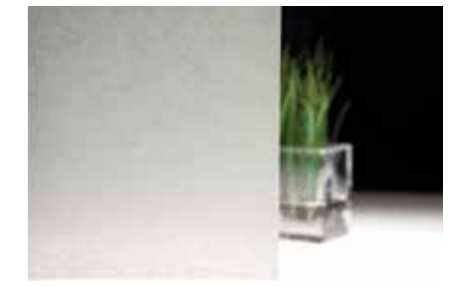
Vega



Sagano 2



Yamato



Rikyu



# A touch of Satin

Fasara Luce



## 3M Fasara - Frost & Mat patterns

These patterns are designed to break up the light and give a very soft warm feel to interiors and exteriors. The frosted patterns recreate with efficiency the aspect of a frosted glass. They partially or totally obscure the view but allow light transmission. The Mat Crystal 2 and Milky Crystal patterns have been developed for exterior applications.



Essen



Lausanne



Oslo



Chamonix



Opaque White



Glace



Fine Crystal



Mat Crystal i



Mat Crystal 2



Milky White



Milky Milky



Milky Crystal



Luce

# Crystallize your Environment

## 3M™ Scotchcal™ Dusted/Frosted Crystal Film Series 7725-300

Long-lasting translucent films, to create the effect of traditional dusted (acid-etched look) or frosted (sandblasted look) glass, neutral or coloured. These films provide excellent uniformity of colour under transmitted or reflected light. They can be used indoor and outdoor. They provide the ability to create complex designs or lettering using the electronic cutting technology. Ideal for corporate identity needs and long term applications.



Dusted Clear

Frosted Clear

Frosted Green

Frosted Blue

Frosted Pink

Frosted Gold

### Product Information

- High quality self-adhesive cast films
- Electronic/computer plot
- Solvent acrylic, pressure-sensitive adhesive
- Film thickness: dusted films 0.05 mm / frosted films 0.09 mm
- Piezo inkjet printable
- Flammability standards
- Roll sizes: 1,22 x 45,7 m / 1,52 x 45,7 m
- Available in 6 finishes

### Maintenance and Cleaning

- No specific maintenance is needed
- If the surface of the film becomes dirty, wash with a special cleaner
- Abrasive type cleaning agents and brushes must not be used

Product	Finish	Maximum 3M Warranty (Years - Interior)	Maximum 3M Warranty (Years - Exterior)
7725-314	Dusted Clear	15	4
7725-324	Frosted Clear	15	4
7725-323	Frosted Pink	15	4
7725-326	Frosted Green	15	4
7725-327	Frosted Blue	15	4
7725-331	Frosted Gold	15	4

Visit [www.3M.eu/ArchitecturalMarkets](http://www.3M.eu/ArchitecturalMarkets) for additional information.



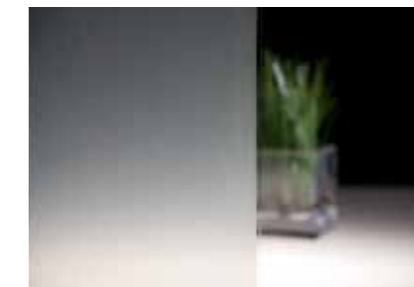
# The Everlasting Ice-frosted effect

## 3M™ Scotchcal™ Haze/Sandblast Crystal Film Series 5525-300

3M™ Scotchcal™ Crystal Film Series 5525 offer a way to create distinctive designs on glass. They are affordable, versatile and stylish, for use in creating medium-term window graphics and internally illuminated displays on flat, clear surfaces. They can be used for interior and exterior applications. Use SC5525C, with Comply™ adhesive, for fast, dry and bubble-free application.



Haze



Sandblast



Haze/Sandblast Finish Family

### Product Information

- Polymeric calendered self-adhesive films
- Electronic/computer plot
- Solvent acrylic, pressure-sensitive adhesive
- Film thickness: 0.08 mm
- Piezo inkjet printable
- Flammability standards
- Roll sizes: 1,22 x 50 m / 1,52 x 50 m
- Available in 2 finishes

### Maintenance and Cleaning

- No specific maintenance is needed
- If the surface of the film becomes dirty, wash with a special cleaner
- Abrasive type cleaning agents and brushes must not be used

Product	Finish	Maximum 3M Warranty (Years - Interior)	Maximum 3M Warranty (Years - Exterior)
5525-314	Haze	5	3
5525-324	Sandblast	5	3
5525C-314	Haze Comply	5	3
5525C-324	Sandblast Comply	5	3

Visit [www.3M.eu/ArchitecturalMarkets](http://www.3M.eu/ArchitecturalMarkets) for additional information.



Visit [www.3M.eu/ArchitecturalMarkets](http://www.3M.eu/ArchitecturalMarkets) for the most current, up-to-date information.



**Architectural Markets**  
**3M Europe**  
Hermeslaan 7  
1831 Diegem  
Belgium